

# MR-6

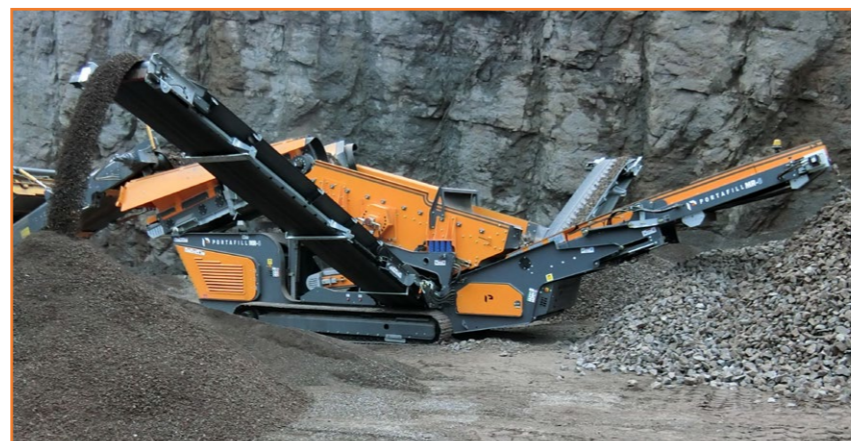
## RECLAIMING SCREENS

- |   |   |
|---|---|
| <p><b>1 Engine</b><br/>Deutz TD2.9L4<br/>EU Stage IIIB, EPA Tier 4<br/>EU Stage V</p>   | <p><b>2 Under Screen Conveyor</b><br/>1000mm (40") Wide Belt<br/>Variable Speed</p>   |
| <p><b>3 Oversize Conveyor</b><br/>1000mm (40") Wide<br/>Discharge Height<br/>3200mm (10'6")</p>                                       | <p><b>4 Wing Conveyors</b><br/>800mm (32") Wide<br/>Discharge Height<br/>3775mm (12'4")</p>                                   |
| <p><b>5 Overall Screen Box</b><br/>Bolted 2 Bearing Screen<br/>3900mm (12'10") x 1300mm (4'3")<br/>Side or End Tensioned Top Deck</p> | <p><b>6 Feeder / Hopper</b><br/>1000mm (40") Wide Belt<br/>Variable Speed<br/>Volume 7 cubic meters (9.1 cu yards) Heaped</p> |
| <p><b>7 Feeder / Hopper</b><br/>Feed Length 4480mm (14'8")<br/>Feed Height 3330mm (10'11")</p>  |   |



### FEATURES

- Hydraulic folding hopper sides for loading
- Side or end tensioned top deck for efficient screening
- Folding under screen conveyor for quick mesh changes
- Quick 2in1 oversize conveyor change
- Easy fold for compact transport dimensions
- Super accessible engine area for service and maintenance



### TRANSPORT

<b>Width</b>	2.5m (8'4")
<b>Length</b>	10.6m (35")
<b>Height</b>	3m (9'9")

<b>Weight</b>	19,000kgs*
<b>APPROX.</b>	41,800lbs*

### WORKING

<b>Width</b>	13.9m (45'9")
<b>Length</b>	12.9m (42'6")
<b>Height</b>	3.3m (10'11")

Patent Applied No. 18162051.9  
& US 62/643,527