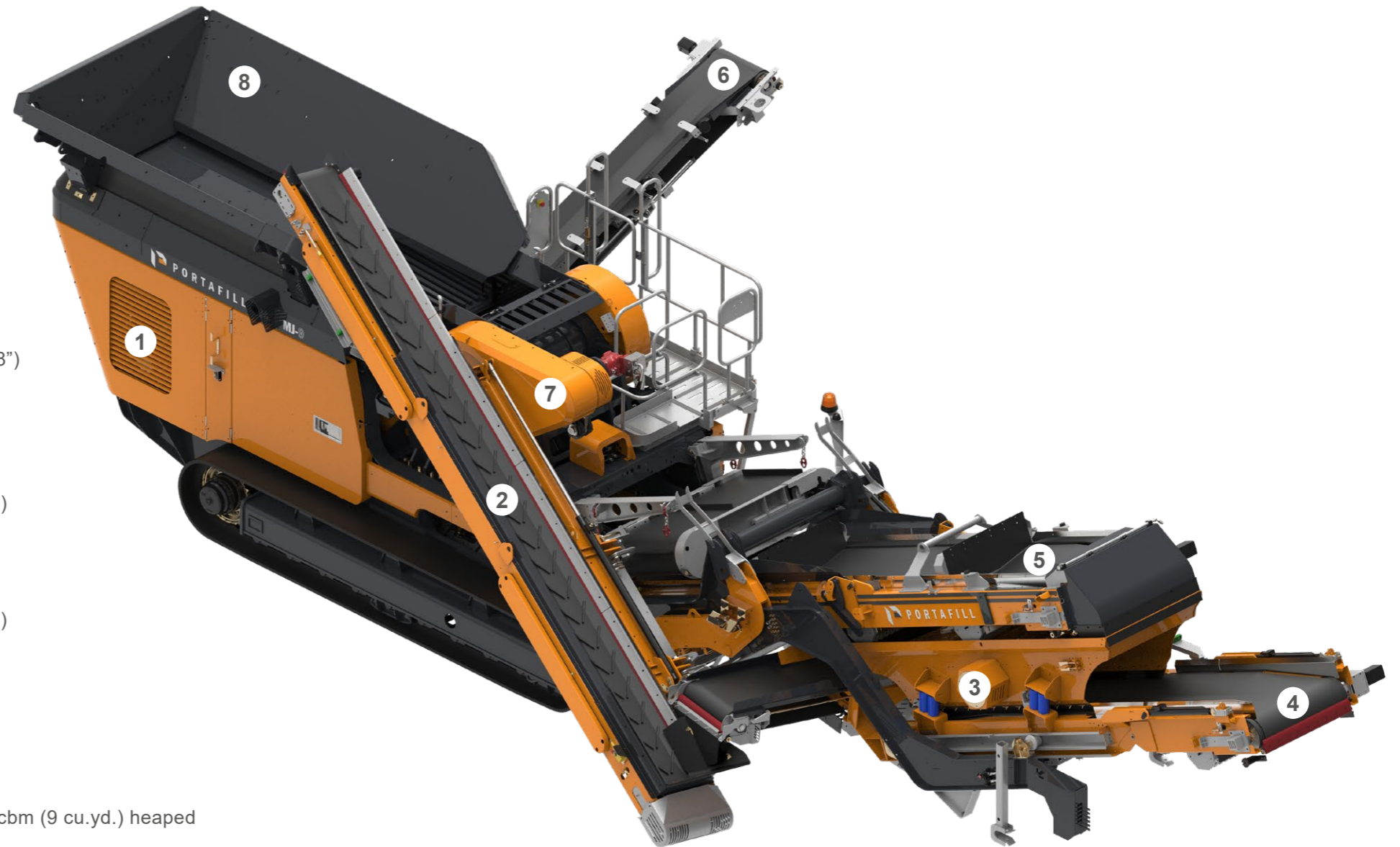


# MJ-9R

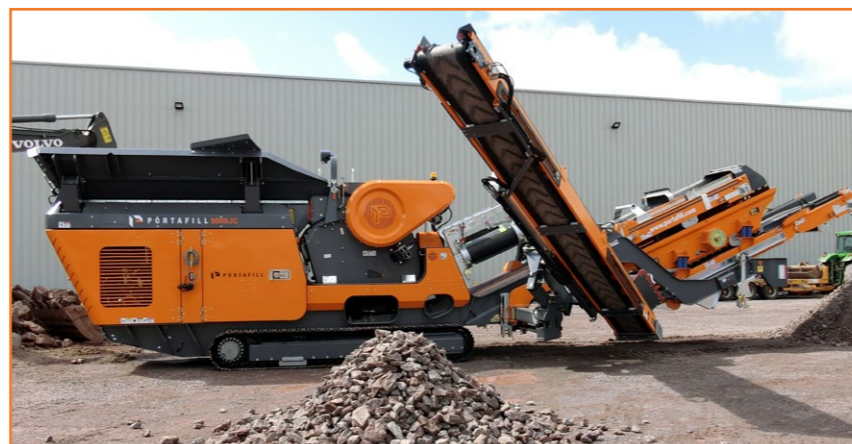
## MOBILE CRUSHERS

- 1 Engine**  
Volvo, CAT or JCB  
Tier 3, Stage V  
or Tier 4F
- 2 Returns Conveyor**  
500mm (20") Wide  
Discharge Height 3575mm (11'8")  
Hydraulic Swing as Standard
- 3 Overall Screen Box**  
2 Bearing, Single Deck  
3340mm x 1000mm (10'11" x 3'3")
- 4 Fines Conveyors**  
900mm (36") Wide  
Discharge Height 2830mm (9'3")
- 5 Main Conveyor**  
900mm (36") Wide  
Discharge Height  
3015mm (9'10")
- 6 Dirt Conveyor**  
500mm (20") Wide  
Discharge Height 2830mm (9'3")
- 7 Jaw Crusher**  
850mm x 500mm (34" x 20")  
Single Toggle
- 8 Vibrating Feeder**  
Feed Length 4100mm (13'5")  
Feed Width 2000mm (6'6")  
Feed Height 3300mm (10'9")  
Capacity 4cbm (5.2 cu.yd.) or 7cbm (9 cu.yd.) heaped



### FEATURES

- Pan feeder with load sensing
- High capacity jaw crusher
- Excellent access to power pack
- Magnet raises hydraulically for clearance
- Full maintenance platform around crusher
- Quickly detach closed loop system and transport independently



### TRANSPORT

|               |             |
|---------------|-------------|
| <b>Width</b>  | 2.5m (8'4") |
| <b>Length</b> | 12.5m (41') |
| <b>Height</b> | 3m (9'9")   |

|                |            |
|----------------|------------|
| <b>Weight</b>  | 35,500kgs* |
| <b>APPROX.</b> | 78,264lbs* |

### WORKING

|               |               |
|---------------|---------------|
| <b>Width</b>  | 13.9m (45'9") |
| <b>Length</b> | 12.9m (42'6") |
| <b>Height</b> | 3.3m (10'11") |

\*With no options